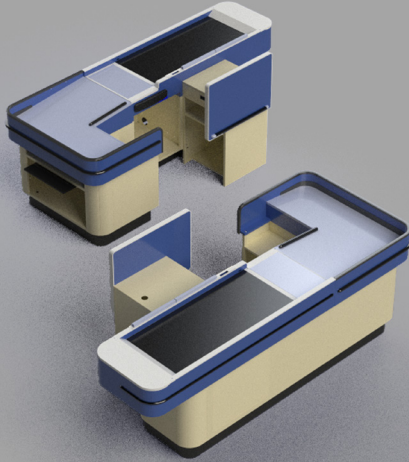


Value Series Reference Chart

Durable, Customizable Store Fixtures Built for Retail Success

Fenco Solutions delivers reliable, high-quality solutions for retailers of all sizes. From belted and non-belted checkouts to service counters and specialty displays, our Value Series showcases 12 versatile models engineered for performance, built with durable welded steel, and customizable to reflect your unique brand. Whether you need a standard fixture or a fully tailored design, Fenco Solutions is your trusted partner in creating functional, stylish retail environments.

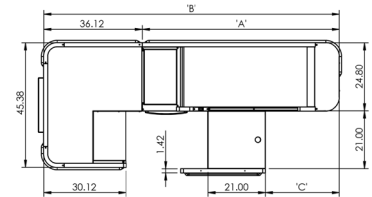




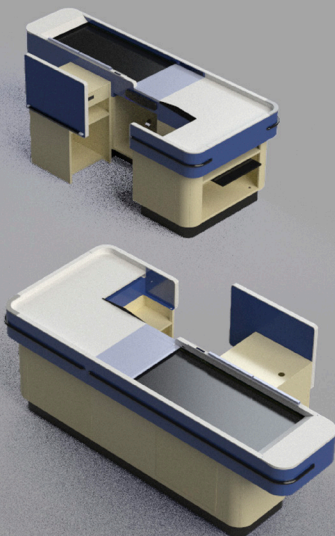
VS1001-L

Features:

- Scan and pass operation
- Radius design
- Cashier bag station
- Black plastic bagging shelf
- Standard 21" cashstand with utility drawer and metal security shield
- Optional keyboard and check-writing shelf
- Cashier lean pad
- Electrical outlets included
- 5 optional conveyor lengths
- 2 optional cashstand widths, 19" & 24.5"
- Durable welded construction
- Other options available



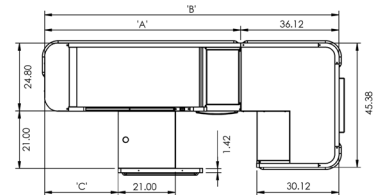
Conveyor Length (ft.)	Dimensions (in.)		
	A	B	C
8'	96.00	132.13	70.38
7'	84.00	120.13	58.38
6'	72.00	108.13	46.38
5'	60.00	96.13	34.38
4'	48.00	84.13	22.38



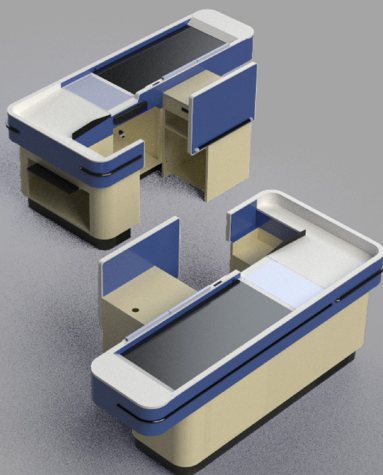
VS1001-R

Features:

- Scan and pass operation
- Radius design
- Cashier bag station
- Black plastic bagging shelf
- Standard 21" cashstand with utility drawer and metal security shield
- Optional keyboard and check-writing shelf
- Cashier lean pad
- Electrical outlets included
- 5 optional conveyor lengths
- 2 optional cashstand widths, 19" & 24.5"
- Durable welded construction
- Other options available



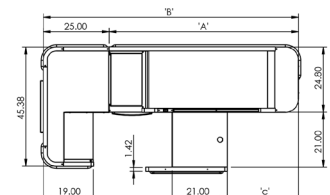
Conveyor Length (ft.)	Dimensions (in.)		
	A	B	C
8'	96.00	132.13	70.38
7'	84.00	120.13	58.38
6'	72.00	108.13	46.38
5'	60.00	96.13	34.38
4'	48.00	84.13	22.38



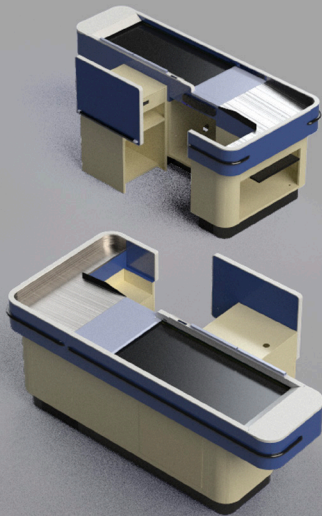
VS1002-L

Features:

- Scan and pass operation - 25" lg. rear module
- Radius design
- Cashier bag station
- Black plastic bagging shelf
- Standard 21" cashstand with utility drawer and metal security shield
- Optional keyboard and check-writing shelf
- Cashier lean pad
- Electrical outlets included
- 5 optional conveyor lengths
- 2 optional cashstand widths, 19" & 24.5"
- Durable welded construction
- Other options available



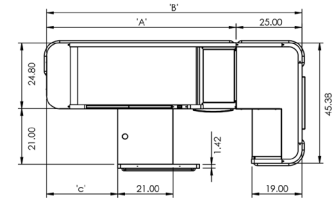
Conveyor Length (ft.)	Dimensions (in.)		
	A	B	C
8'	96.00	121.00	70.38
7'	84.00	109.00	58.38
6'	72.00	97.00	46.38
5'	60.00	85.00	34.38
4'	48.00	73.00	22.38



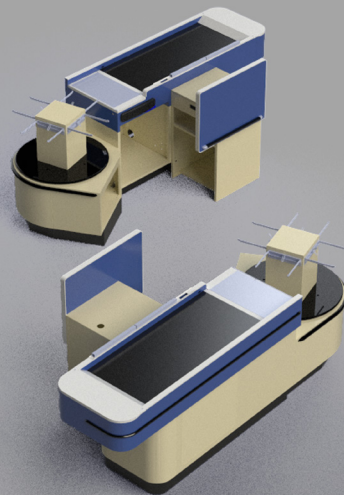
VS1002-R

Features:

- Scan and pass operation - 25" lg. rear module
- Radius design
- Cashier bag station
- Black plastic bagging shelf
- Standard 21" cashstand with utility drawer and metal security shield
- Optional keyboard and check-writing shelf
- Cashier lean pad
- Electrical outlets included
- 5 optional conveyor lengths
- 2 optional cashstand widths, 19" & 24.5"
- Durable welded construction
- Other options available



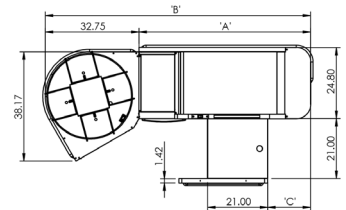
Conveyor Length (ft.)	Dimensions (in.)		
	A	B	C
8'	96.00	121.00	70.38
7'	84.00	109.00	58.38
6'	72.00	97.00	46.38
5'	60.00	85.00	34.38
4'	48.00	73.00	22.38



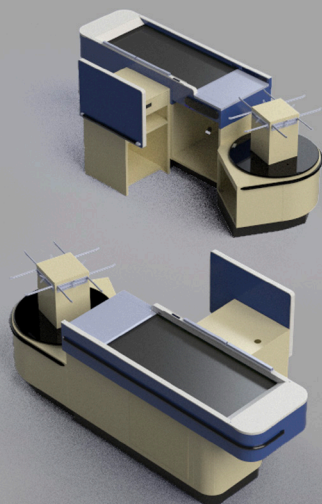
VS2001-L

Features:

- 4-Bag Carousel operation
- Radius design
- Standard 21" cashstand with utility drawer and metal security shield
- Optional keyboard and check-writing shelf
- Cashier lean pad
- Electrical outlets included
- 5 optional conveyor lengths
- 2 optional cashstand widths, 19" & 24.5"
- Durable welded construction
- Other options available



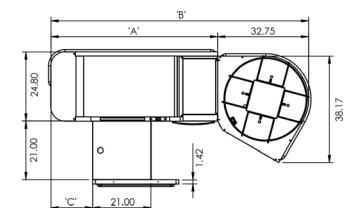
Conveyor Length (ft.)	Dimensions (in.)		
	A	B	C
8'	96.00	128.71	70.38
7'	84.00	116.71	58.38
6'	72.00	104.71	46.38
5'	60.00	92.71	34.38
4'	48.00	80.71	22.38



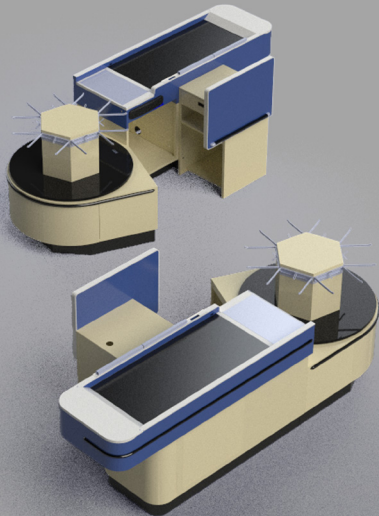
VS2001-R

Features:

- 4-Bag Carousel operation
- Radius design
- Standard 21" cashstand with utility drawer and metal security shield
- Optional keyboard and check-writing shelf
- Cashier lean pad
- Electrical outlets included
- 5 optional conveyor lengths
- 2 optional cashstand widths, 19" & 24.5"
- Durable welded construction
- Other options available



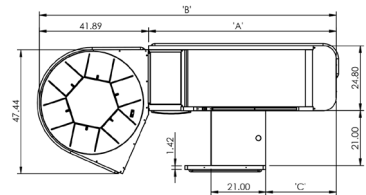
Conveyor Length (ft.)	Dimensions (in.)		
	A	B	C
8'	96.00	128.71	70.38
7'	84.00	116.71	58.38
6'	72.00	104.71	46.38
5'	60.00	92.71	34.38
4'	48.00	80.71	22.38



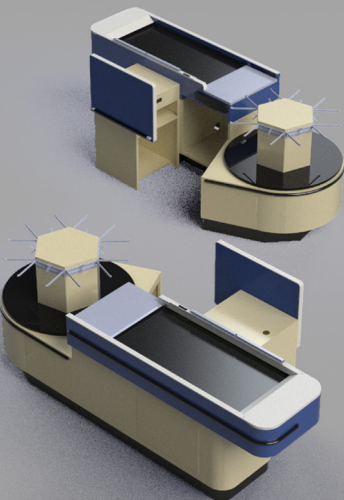
VS2002-L

Features:

- 6-Bag Carousel operation
- Radius design
- Standard 21" cashstand with utility drawer and metal security shield
- Optional keyboard and check-writing shelf
- Cashier lean pad
- Electrical outlets included
- 5 optional conveyor lengths
- 2 optional cashstand widths, 19" & 24.5"
- Durable welded construction
- Other options available



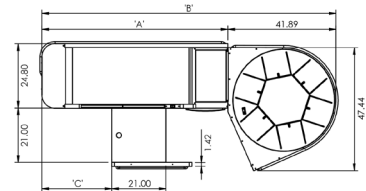
Conveyor Length (ft.)	Dimensions (in.)		
	A	B	C
8'	96.00	137.85	70.38
7'	84.00	125.85	58.38
6'	72.00	113.85	46.38
5'	60.00	101.85	34.38
4'	48.00	89.85	22.38



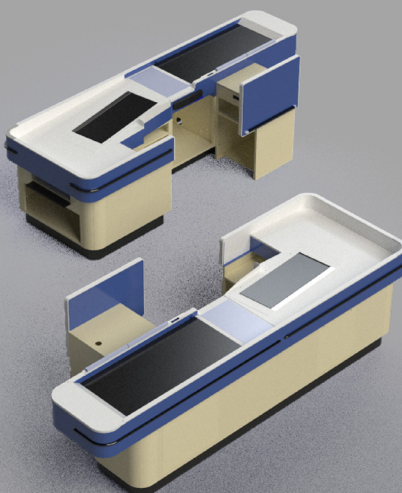
VS2002-R

Features:

- 6-Bag Carousel operation
- Radius design
- Standard 21" cashstand with utility drawer and metal security shield
- Optional keyboard and check-writing shelf
- Cashier lean pad
- Electrical outlets included
- 5 optional conveyor lengths
- 2 optional cashstand widths, 19" & 24.5"
- Durable welded construction
- Other options available



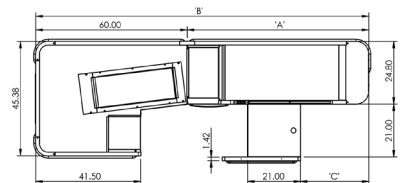
Conveyor Length (ft.)	Dimensions (in.)		
	A	B	C
8'	96.00	137.85	70.38
7'	84.00	125.85	58.38
6'	72.00	113.85	46.38
5'	60.00	101.85	34.38
4'	48.00	89.85	22.38



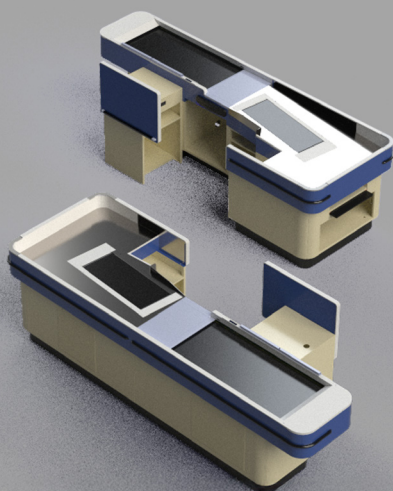
VS3001-L

Features:

- Power takeaway operation - 60" lg. rear module
- Radius design
- Cashier bag station
- Black plastic bagging shelf
- Standard 21" cashstand with utility drawer and metal security shield
- Optional keyboard and check-writing shelf
- Cashier lean pad
- Electrical outlets included
- 5 optional conveyor lengths
- 2 optional cashstand widths, 19" & 24.5"
- Durable welded construction
- Other options available



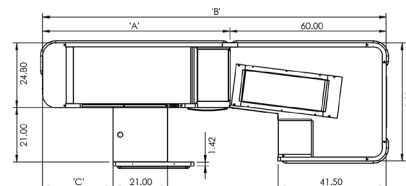
Conveyor Length (ft.)	Dimensions (in.)		
	A	B	C
8'	96.00	155.91	70.38
7'	84.00	143.91	58.38
6'	72.00	131.91	46.38
5'	60.00	119.91	34.38
4'	48.00	107.91	22.38



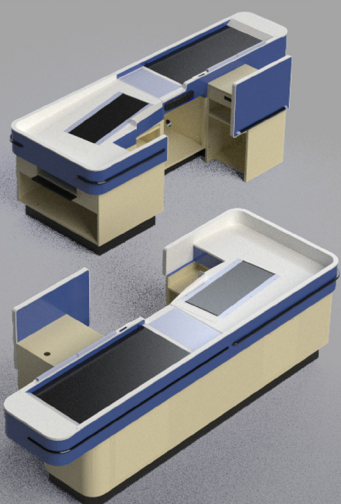
VS3001-R

Features:

- Power takeaway operation - 60" lg. rear module
- Radius design
- Cashier bag station
- Black plastic bagging shelf
- Standard 21" cashstand with utility drawer and metal security shield
- Optional keyboard and check-writing shelf
- Cashier lean pad
- Electrical outlets included
- 5 optional conveyor lengths
- 2 optional cashstand widths, 19" & 24.5"
- Durable welded construction
- Other options available



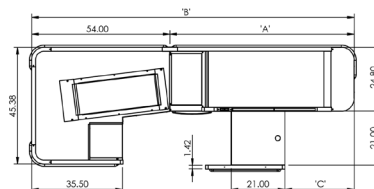
Conveyor Length (ft.)	Dimensions (in.)		
	A	B	C
8'	96.00	155.91	70.38
7'	84.00	143.91	58.38
6'	72.00	131.91	46.38
5'	60.00	119.91	34.38
4'	48.00	107.91	22.38



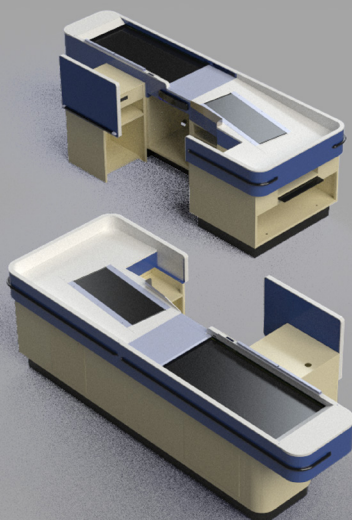
VS3002-L

Features:

- Power takeaway operation - 54" lg. rear module
- Radius design
- Cashier bag station
- Black plastic bagging shelf
- Standard 21" cashstand with utility drawer and metal security shield
- Optional keyboard and check-writing shelf
- Cashier lean pad
- Electrical outlets included
- 5 optional conveyor lengths
- 2 optional cashstand widths, 19" & 24.5"
- Durable welded construction
- Other options available



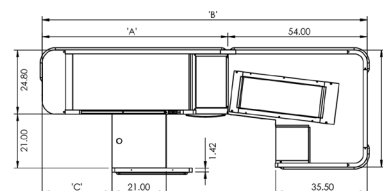
Conveyor Length (ft.)	Dimensions (in.)		
	A	B	C
8'	96.00	150.00	70.38
7'	84.00	138.00	58.38
6'	72.00	126.00	46.38
5'	60.00	114.00	34.38
4'	48.00	102.00	22.38



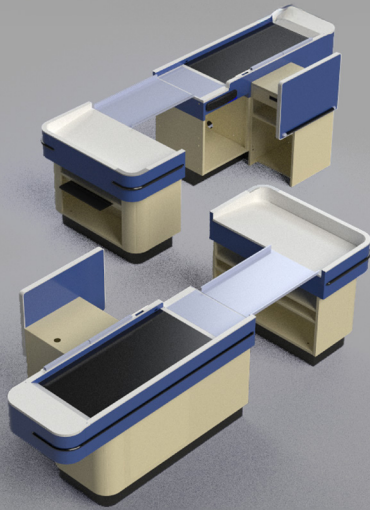
VS3002-R

Features:

- Power takeaway operation - 54" lg. rear module
- Radius design
- Cashier bag station
- Black plastic bagging shelf
- Standard 21" cashstand with utility drawer and metal security shield
- Optional keyboard and check-writing shelf
- Cashier lean pad
- Electrical outlets included
- 5 optional conveyor lengths
- 2 optional cashstand widths, 19" & 24.5"
- Durable welded construction
- Other options available



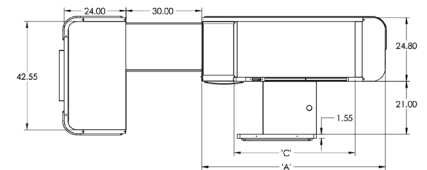
Conveyor Length (ft.)	Dimensions (in.)		
	A	B	C
8'	96.00	150.00	70.38
7'	84.00	138.00	58.38
6'	72.00	126.00	46.38
5'	60.00	114.00	34.38
4'	48.00	102.00	22.38



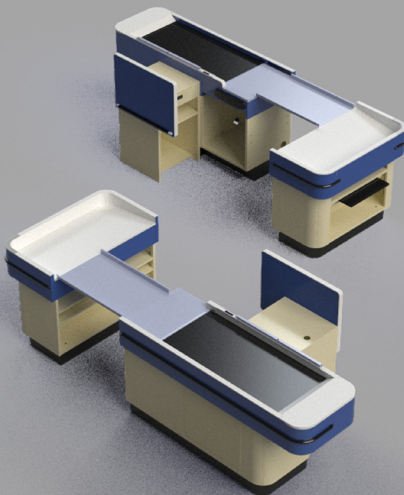
VS5003-L

Features:

- Scan and pass/scan and bag operation
- Removable chute for walk through option
- Radius design
- Cashier bag station
- Black plastic bagging shelf
- Standard 21" cashstand with utility drawer and metal security shield
- Optional keyboard and check-writing shelf
- Cashier lean pad
- Electrical outlets included
- 5 optional conveyor lengths
- 2 optional cashstand widths, 19" & 24.5"
- Durable welded construction
- Other options available



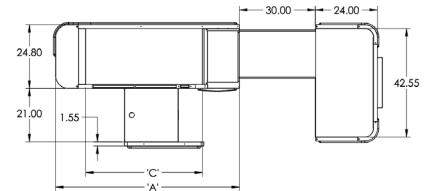
Conveyor Length (ft.)	Dimensions (in.)		
	A	B	C
8'	96.00	150.00	70.38
7'	84.00	138.00	58.38
6'	72.00	126.00	46.38
5'	60.00	114.00	34.38
4'	48.00	102.00	22.38



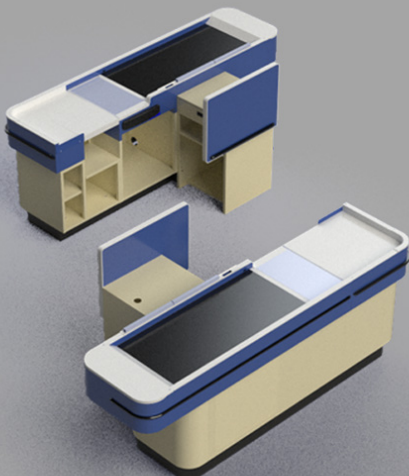
VS5003-R

Features:

- Scan and pass/scan and bag operation
- Removable chute for walk through option
- Radius design
- Cashier bag station
- Black plastic bagging shelf
- Standard 21" cashstand with utility drawer and metal security shield
- Optional keyboard and check-writing shelf
- Cashier lean pad
- Electrical outlets included
- 5 optional conveyor lengths
- 2 optional cashstand widths, 19" & 24.5"
- Durable welded construction
- Other options available



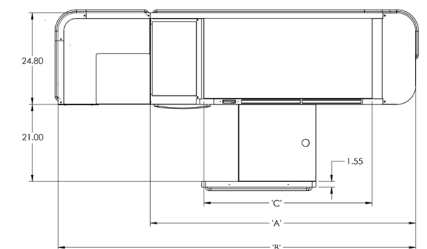
Conveyor Length (ft.)	Dimensions (in.)		
	A	B	C
8'	96.00	150.00	70.38
7'	84.00	138.00	58.38
6'	72.00	126.00	46.38
5'	60.00	114.00	34.38
4'	48.00	102.00	22.38



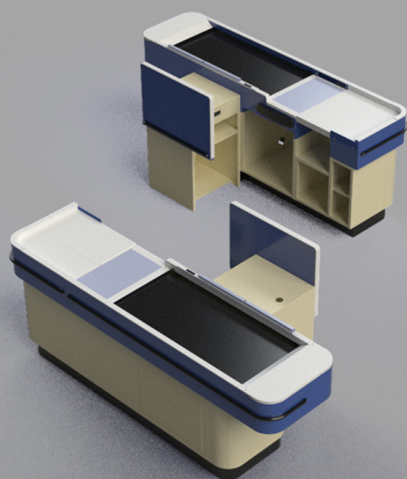
VS6001-L

Features:

- Scan and pass operation - 25" lg. rear module
- Bagwell with cover
- Radius design
- Cashier bag station
- Standard 21" cashstand with utility drawer and metal security shield
- Optional keyboard and check-writing shelf
- Cashier lean pad
- Electrical outlets included
- 5 optional conveyor lengths
- 2 optional cashstand widths, 19" & 24.5"
- Durable welded construction
- Other options available



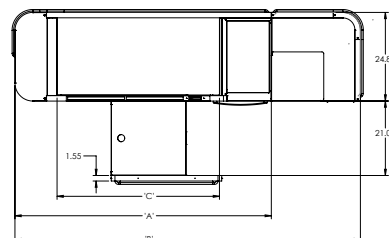
Conveyor Length (ft.)	Dimensions (in.)		
	A	B	C
8'	96.00	121.11	70.38
7'	84.00	109.11	58.38
6'	72.00	97.11	46.38
5'	60.00	85.11	34.38
4'	48.00	73.11	22.38



VS6001-R

Features:

- Scan and pass operation - 25" lg. rear module
- Bagwell with cover
- Radius design
- Cashier bag station
- Standard 21" cashstand with utility drawer and metal security shield
- Optional keyboard and check-writing shelf
- Cashier lean pad
- Electrical outlets included
- 5 optional conveyor lengths
- 2 optional cashstand widths, 19" & 24.5"
- Durable welded construction
- Other options available



Conveyor Length (ft.)	Dimensions (in.)		
	A	B	C
8'	96.00	121.11	70.38
7'	84.00	109.11	58.38
6'	72.00	97.11	46.38
5'	60.00	85.11	34.38
4'	48.00	73.11	22.38

Standard Colors



Premium Colors

Additional costs apply for use of premium colors.

* These colors are representations and approximate the actual colors as close as possible *



www.FENCOSOLUTIONS.com

Find your solution today!



Toll-Free: 800.486.8484